



Sound **ART-WORKS**

Keep this boat alive

Collection No. 1

EDITORIAL

... A moment of indulgence is an intimate connection between our values and beliefs; it is the final culmination of the equilibrium we seek to attain in our lives.

Design INDULGENCE creates “crafted moments of beauty” by designing experiences that resonate with people.

The result are products with an orchestration of every single detail and ingredient to indulge those moments of beauty.

Exploring this new and sensible values for consumption creates timeless work of art...”

Sound ART-WORKS

The sound division of DI, explores those new values on music and sound beyond the surface to “connect people with more than sound”.

Collection No. 1 “Keep this boat alive”

This moment of beauty happens at home a place where music is always at the centre of activities and emotions, the intent: a bridge to connect the increasing gap between HOME & AUDIO.

Home, adding unique and relevant value by producing sophisticated *pieces of ART*. Art that will bring new stories of beauty to your home.

Audio, with an exquisite experience of sound, engineering extraordinary technology to embed music into every activity in your life.

“Connecting you with more than sound”
has five ingredients:

A story vision. **“Keep this boat alive”**

Memorable iconic forms. **Outlines of a boat**

Crafted to perfection. **Reclaimed teak + Chinese porcelain**

Exquisite audio experience. **Any activity and every moment.**

Loss-less definition. **Your Home your own stage.**



Home + Audio system

Sound ART-WORKS brings music to every aspect of your life, in any place with any device via Bluetooth + USB loss less streaming, the highest resolution to bring the band at home.



INTEGRATED AMPLIFIER

Class D hyperdynamic switching

Dimensions (W x H x D) 450mm x 116mm x 143mm

Material

Reclaimed teak wood housing
Chinese porcelain
Internal metal housing

Class D amp

Frequency response 20Hz-20KHz +/-0.8dB
Output power 50W*2 into 4 ohm
THD + N <0.4%
Speaker impedance 4-16 Ω
Channel separation >75dB at 1KHz
Signal to Noise ratio >75dB reference to rated power

Inputs

1 pairs of RCA
1 pair XLR
Output
1 pair speaker binding post

User interface

Front panel Input selector
LED for input source indicator
Volume control

Power

AC mains voltage 120V/230V (auto switching)

DAC

Digital Audio Converter + Headphone Amplifier

Dimensions (W x H x D) 450mm x 168mm X 45mm
Frequency response 20Hz-20KHz +/-0.2dB

Material

Reclaimed teak wood housing
Internal metal housing

Headphone

Recommended Impedance 16R-600R
Line output level 2 VRMS line output
Balance output level 4V RMS balance output
Headphone output level 55mW into 32 ohm
THD + N <0.0008% THD+N, 2Vrms into 100K Ω
<0.0008% THD+N, 4Vrms into 600 Ω
>0.003% THD+N, 49mW into 32 Ω

Inputs

Coaxial
Optical
Bluetooth 4.0

Digital IN

USB A for iPod/iPone/iPad

Outputs

Unbalanced, 1 pair RCA jacks
Balanced, 1 pair XLR output jacks
6.5mm stereo output jack + balance output
headphone jack
USB micro-B (smart phones with USB OTG & computers)



Any activity and every moment.

Instant freedom point-to-point wireless connection with Bluetooth (aptX) wireless. This high fidelity reception allows any Bluetooth - enabled device to shamelessly stream music, offering improved performance, ease-of-use, and incredible sound quality for every day every moment use.

Your Home your own stage.

A highly efficient design capable of ultra-dynamic power adjusts the signal output with precision and accuracy. This allows us to reproduce musical dynamics with fast transients to create the best details which in turn results in a more natural reproduction.

SPEAKERS

2 Way speaker with passive cross over

Dimensions (W x H x D) 213mm x 418mm x 244mm

Material
Reclaimed teak wood front panel
Epoxy box shell

Specifications
Normal Impedance 4 Ohm
Nominal Power Handling 100W
Frequency Response 50-22KHz
Crossover point 1.2KHz / -12dB
Sensitivity (1W/1M) 90dB

Net Weight
15Kg



...a meaningful story.

Inspired by abandoned fishing boats made of wood found on the thai coast sunk on the sand, standing out time and recalling their value of a past useful life.

Our inspiration came along with the idea of giving these precious materials a new chance by designing objects with their own narrative, telling story of where they come from and where they will go.



Outlines of a boat.

Its form is a homage to the origin of materials and simplicity of use;. Our amplifier, DAC & pair of speakers recall its own story showing memories of a boat theme with iconic silhouettes.



Reclaimed ancient Teak

Reclaimed old growth teak enriches the beauty and authentic character of the collection.

Wood is warm and inviting, looking and feeling more comfortable with age improving with time.



Chinese porcelain

From a hot cramped workshop the porcelain makers are making porcelain that is used as decoration all over the world. Craftsmanship is essential, it's not just about industrial process and it requires a certain sensibility of an artisan to bring it alive.



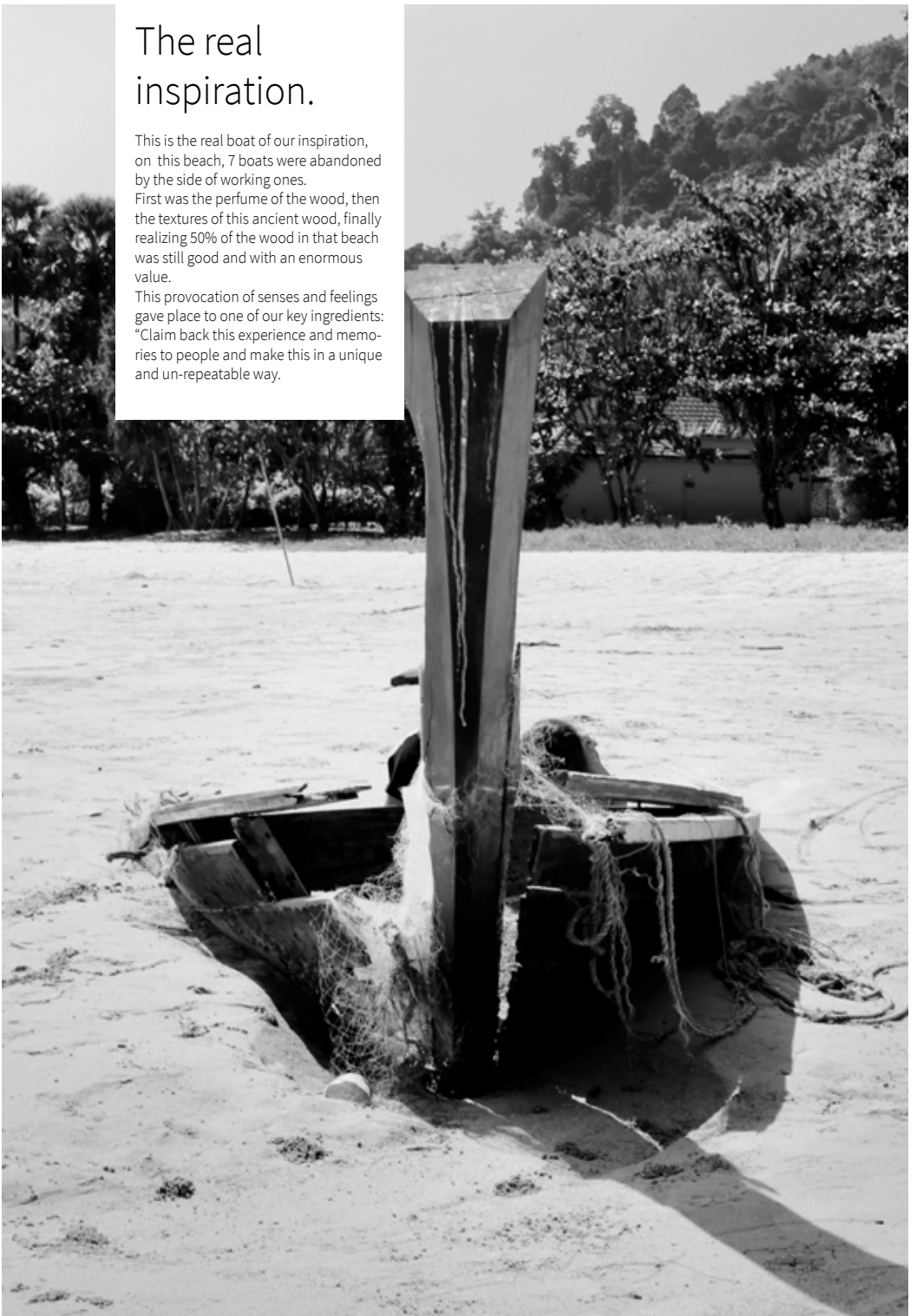
Insights of the story

The real inspiration.

This is the real boat of our inspiration, on this beach, 7 boats were abandoned by the side of working ones.

First was the perfume of the wood, then the textures of this ancient wood, finally realizing 50% of the wood in that beach was still good and with an enormous value.

This provocation of senses and feelings gave place to one of our key ingredients: "Claim back this experience and memories to people and make this in a unique and un-repeatable way.





About the best combination

Porcelain mold. The teak brought the material at centre of the story, becoming an essence.

Experimenting with Chinese Porcelain this feeling came again, the nature of the craft, the nature of the material and nobility on its use...

Materials of a similar value and the combination came: Reclaimed teak and Chinese porcelain.

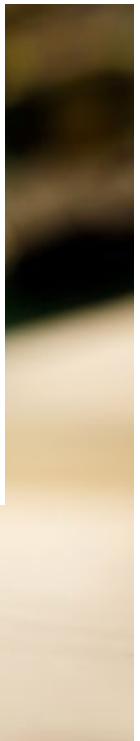


Matching the sound

Exploring technology for sound has a pragmatic engineering of emotions. First, experienced engineering to design the best layout and the best schematics that will take profit of the ultimate technology.

After this is done the potential is unlocked, the combination of components will make the difference on sound. Where engineering matches emotional feelings, creating colour, tone and different tastes on the sound.

It is a mix and match process of empathy about what will be best for a listener.



ART Show

First prototype, our intent was creating a real piece of art but capable of delivering the best sound.

A product with the skill of performing at the centre of an Art-Show and inspiring enough to be the model of a photography session.

Inviting creative professionals to co-create what today is the real platform of our proposition: Sound ART-WORKS... more than sound.



*Connecting you
with more than sound*

Sound **ART-WORKS** 

Designed by DESIGN **INDULGENCE** in Hong Kong

For more information go to www.designindulgence.com | E-mail: info@designindulgence.com
Address: F & H, 17/F - International Industrial Centre - Nos.2-8 Kwei Tei St. - Fotan Shatin N.T. - Hong Kong
Tel: +852-39746318 | Fax: +852-21119749